



ETHICA *diamonds*

BROCHURE No. 5



“You are my heart,
my life, my one and
only thought.”

Sir Arthur Conan Doyle,
The White Company

Classic

6

Shaped **40**

Diamond Set

16

Vintage

34

Signets

48

Decorative

44

Index

65

Finishing Touches

52



PLATIN^{GOLD}IN

THE NEW PLATINUM STANDARD



We are delighted to be offering a new platinum alloy for our Wedding Ring collection. Platinum Gold sets a new standard by enhancing the benefits of other Platinum alloys, providing outstanding quality.

- **High Precious Metal Content**

Platinum Gold mixes platinum with pure gold to create an alloy that has 97.3% precious metal content.

- **Exceptional Material Properties**

With excellent manufacturing properties we are confident that Platinum Gold will further develop our production processes and ensure a truly luxurious product of the highest possible quality.

- **Outstanding Workability**

Although Platinum Gold is harder and stronger than other Platinum alloys, it's malleability is exceptionally good, allowing us to introduce increasingly creative designs with intricate detail to our offering.

- **Brilliant White Colour**

Platinum Gold is brilliantly white and will further enhance the beauty of sparkling diamonds.

We are pleased to currently have sole rights within the UK to bring you this beautiful and versatile alloy, that we believe will provide you with a real point of difference in the wedding ring market.

Created & Crafted
in Britain



Classic

Court.....8
Flat Court.....9
Centre Cushion.....10
Rounded Flat.....12

D-Shape.....13
Paris Profile14
Bevelled Edge15



“I have succeeded as gloriously as anyone who's ever lived:
I've loved another with all my heart and soul; and to me,
this has always been enough.
Nicholas Sparks, The Notebook ”





Classic

Court

- PLATINUM
- 18CT YELLOW
- 18CT WHITE
- 18CT ROSE
- 9CT YELLOW
- 9CT WHITE
- PALLADIUM



BLC LIGHT - 1.4  ● BC MEDIUM - 1.8  ● BHC HEAVY - 2.3  ●

Finger sizes available from H to Z.

 Indicates Depth Ring Back (DRB). To personalise your Classic wedding band with a unique finish see pages 52-56.

Classic

Flat Court

- PLATINUM
- 18CT YELLOW
- 18CT WHITE
- 18CT ROSE
- 9CT YELLOW
- 9CT WHITE
- PALLADIUM



BLFC LIGHT - 1.4  ● BFC MEDIUM - 1.8  ● BHFC HEAVY - 2.3  ●

Finger sizes available from H to Z.

 Indicates Depth Ring Back (DRB). To personalise your Classic wedding band with a unique finish see pages 52-56.

Classic

Centre Cushion

- PLATINUM
- 18CT YELLOW
- 18CT WHITE
- 18CT ROSE
- 9CT YELLOW
- 9CT WHITE
- PALLADIUM



BLCU LIGHT - 1.4

BCCU MEDIUM - 1.8

BHCU HEAVY - 2.3

Finger sizes available from H to Z.

Indicates Depth Ring Back (DRB). To personalise your Classic wedding band with a unique finish see pages 52-56.



Classic

Rounded Flat

- PLATINUM
- 18CT YELLOW
- 18CT WHITE
- 18CT ROSE
- 9CT YELLOW
- 9CT WHITE
- PALLADIUM



BRF MEDIUM - 1.8  

Finger sizes available from H to Z.


 Indicates Depth Ring Back (DRB). To personalise your Classic wedding band with a unique finish see pages 52-56.

Classic

D-Shape

- PLATINUM
- 18CT YELLOW
- 18CT WHITE
- 18CT ROSE
- 9CT YELLOW
- 9CT WHITE
- PALLADIUM



BD LIGHT - 1.4   BHD MEDIUM - 1.8  

Finger sizes available from H to Z.

 Indicates Depth Ring Back (DRB). To personalise your Classic wedding band with a unique finish see pages 52-56.

Classic

Paris Profile

- PLATINUM
- 18CT YELLOW
- 18CT WHITE
- 18CT ROSE
- 9CT YELLOW
- 9CT WHITE
- PALLADIUM



BDC2.5 BDC4.0 BHDC5.0 BHDC6.0



BDC MEDIUM - 1.8  BHDC HEAVY - 2.3 

Finger sizes available from H to Z.

 Indicates Depth Ring Back (DRB). To personalise your Classic wedding band with a unique finish see pages 52-56.

Classic

Bevelled Edge

- PLATINUM
- 18CT YELLOW
- 18CT WHITE
- 18CT ROSE
- 9CT YELLOW
- 9CT WHITE
- PALLADIUM



BLBE8.0 BBE6.0 BLBE4.0 BBE2.5



BLBE LIGHT - 1.4  BBE HEAVY - 2.3 

Finger sizes available from H to Z.

 Indicates Depth Ring Back (DRB). To personalise your Classic wedding band with a unique finish see pages 52-56.

Diamond Set

Court Channel Set	18	Flat Court Grain Set	23	GCW Flat Court Channel Set ...	29
Flat Court Channel Set.....	19	Flat Court Double Row	24	GCW Court Grain Set	31
Court Offset.....	20	Edge Set	26	Eternity Vintage.....	32
Flat Court Offset	21	Double Edge Set	27	Eternity.....	33
Court Grain Set.....	22	GCW Court Channel Set.....	28		



“I see you everywhere, in the stars, in the river;
to me you're everything that exists; the reality
of everything.”
Virginia Woolf, Night and Day



Diamond set wedding bands are available either 100%, 60% or 40% set; alternatively we have a selection of guaranteed carat weight bands. All rings are available in a range of band widths and can be set with a choice of GVS or HSi diamonds.



WG4/5R125, WG8/5R125

Diamond Set

Court Channel Set

- PLATINUM
- 18CT YELLOW
- 18CT WHITE
- 18CT ROSE



WG5/3.5X125



WGH5/3.5R150



WGF5/3R125



2.0mm



2.5mm



3.0mm



3.5mm



4.0mm

COURT - 1.8

100%	STONE SHAPE	CODE	TCW	60%	STONE SHAPE	CODE	TCW	40%	STONE SHAPE	CODE	TCW
○	WG5/2R125		0.38ct - 0.50ct	○	WGH5/2R125		0.22ct - 0.29ct	○	WGF5/2R125		0.15ct - 0.20ct
○	WG5/2.5R125		0.38ct - 0.50ct	○	WGH5/2.5R125		0.22ct - 0.29ct	○	WGF5/2.5R125		0.15ct - 0.20ct
○	WG5/3R125		0.38ct - 0.50ct	○	WGH5/3R125		0.22ct - 0.29ct	○	WGF5/3R125		0.15ct - 0.20ct
○	WG5/3.5R125		0.38ct - 0.50ct	○	WGH5/3.5R125		0.22ct - 0.29ct	○	WGF5/3.5R125		0.15ct - 0.20ct
○	WG5/3.5R150		0.51ct - 0.71ct	○	WGH5/3.5R150		0.30ct - 0.42ct	○	WGF5/3.5R150		0.20ct - 0.29ct
○	WG5/4R200		0.78ct - 1.02ct	○	WGH5/4R200		0.48ct - 0.63ct	○	WGF5/4R200		0.30ct - 0.42ct
□	WG5/2X125		0.60ct - 0.78ct	□	WGH5/2X125		0.38ct - 0.49ct	□	WGF5/2X125		0.25ct - 0.33ct
□	WG5/2.5X125		0.60ct - 0.78ct	□	WGH5/2.5X125		0.38ct - 0.49ct	□	WGF5/2.5X125		0.25ct - 0.33ct
□	WG5/3X125		0.60ct - 0.78ct	□	WGH5/3X125		0.38ct - 0.49ct	□	WGF5/3X125		0.25ct - 0.33ct
□	WG5/3.5X125		0.60ct - 0.78ct	□	WGH5/3.5X125		0.38ct - 0.49ct	□	WGF5/3.5X125		0.25ct - 0.33ct
□	WG5/3.5X150		0.78ct - 1.06ct	□	WGH5/3.5X150		0.43ct - 0.61ct	□	WGF5/3.5X150		0.28ct - 0.41ct

Indicates Depth Ring Back (DRB). TCW: Total Carat Weight. Some content varies according to finger size.

Diamond Set

Flat Court Channel Set

- PLATINUM
- 18CT YELLOW
- 18CT WHITE
- 18CT ROSE



WG2/2.5R125



WGH2/3X125



WGF2/3R125



2.0mm



2.5mm



3.0mm



3.5mm

FLAT COURT - 1.8

100%	STONE SHAPE	CODE	TCW	60%	STONE SHAPE	CODE	TCW	40%	STONE SHAPE	CODE	TCW
○	WG2/2R125		0.37ct - 0.50ct	○	WGH2/2R125		0.22ct - 0.29ct	○	WGF2/2R125		0.15ct - 0.20ct
○	WG2/2.5R125		0.37ct - 0.50ct	○	WGH2/2.5R125		0.22ct - 0.29ct	○	WGF2/2.5R125		0.15ct - 0.20ct
○	WG2/3R125		0.37ct - 0.50ct	○	WGH2/3R125		0.22ct - 0.29ct	○	WGF2/3R125		0.15ct - 0.20ct
○	WG2/3.5R125		0.37ct - 0.50ct	○	WGH2/3.5R125		0.22ct - 0.29ct	○	WGF2/3.5R125		0.15ct - 0.20ct
○	WG2/3.5R150		0.53ct - 0.72ct	○	WGH2/3.5R150		0.30ct - 0.42ct	○	WGF2/3.5R150		0.21ct - 0.29ct
□	WG2/2X125		0.60ct - 0.78ct	□	WGH2/2X125		0.38ct - 0.49ct	□	WGF2/2X125		0.25ct - 0.33ct
□	WG2/2.5X125		0.60ct - 0.78ct	□	WGH2/2.5X125		0.38ct - 0.49ct	□	WGF2/2.5X125		0.25ct - 0.33ct
□	WG2/3X125		0.60ct - 0.78ct	□	WGH2/3X125		0.37ct - 0.49ct	□	WGF2/3X125		0.25ct - 0.33ct
□	WG2/3X150		0.78ct - 1.06ct	□	WGH2/3X150		0.43ct - 0.61ct	□	WGF2/3X150		0.28ct - 0.41ct

Indicates Depth Ring Back (DRB). TCW: Total Carat Weight. Some content varies according to finger size.

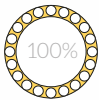
Diamond Set

Court Offset

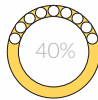
- PLATINUM
- 18CT YELLOW
- 18CT WHITE
- 18CT ROSE



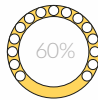
WG8/4R125



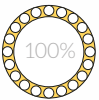
WGF4/5R125



WGH4/3.5X125



WG4/6R125



3.5mm



4.0mm



5.0mm



6.0mm

COURT - 1.8

100%	STONE SHAPE	CODE	TCW
	○	WG4/4R125	0.37ct - 0.50ct
	○	WG4/5R125	0.37ct - 0.50ct
	○	WG4/6R125	0.37ct - 0.50ct
	□	WG4/3.5X125	0.60ct - 0.82ct
	□	WG4/3.5X150	0.78ct - 1.06ct
100%	COURT WAVE		
	○	WG8/4R125	0.38ct - 0.51ct
	○	WG8/5R125	0.38ct - 0.51ct

60%	STONE SHAPE	CODE	TCW
	○	WGH4/4R125	0.22ct - 0.29ct
	○	WGH4/5R125	0.22ct - 0.29ct
	○	WGH4/6R125	0.22ct - 0.29ct
	□	WGH4/3.5X125	0.37ct - 0.49ct
	□	WGH4/3.5X150	0.43ct - 0.61ct

40%	STONE SHAPE	CODE	TCW
	○	WGF4/4R125	0.15ct - 0.20ct
	○	WGF4/5R125	0.15ct - 0.20ct
	○	WGF4/6R125	0.15ct - 0.20ct
	□	WGF4/3.5X125	0.25ct - 0.33ct
	□	WGF4/3.5X150	0.28ct - 0.41ct

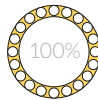
Diamond Set

Flat Court Offset

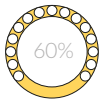
- PLATINUM
- 18CT YELLOW
- 18CT WHITE
- 18CT ROSE



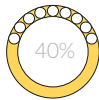
WG3/3.5X125



WGH3/5R125



WGF3/4R125



3.0mm



3.5mm



4.0mm



5.0mm

FLAT COURT - 1.8

100%	STONE SHAPE	CODE	TCW
	○	WG3/3R100	0.27ct - 0.33ct
	○	WG3/3.5R125	0.40ct - 0.52ct
	○	WG3/4R125	0.38ct - 0.50ct
	○	WG3/5R125	0.38ct - 0.50ct
	○	WG3/5R150	0.53ct - 0.72ct
	□	WG3/3.5X125	0.60ct - 0.78ct
	□	WG3/4X125	0.60ct - 0.78ct
	□	WG3/4X150	0.78ct - 1.06ct
	□	WG3/5X150	0.78ct - 1.06ct

60%	STONE SHAPE	CODE	TCW
	○	WGH3/3R100	0.16ct - 0.20ct
	○	WGH3/3.5R125	0.24ct - 0.32ct
	○	WGH3/4R125	0.22ct - 0.29ct
	○	WGH3/5R125	0.22ct - 0.29ct
	○	WGH3/5R150	0.30ct - 0.42ct
	□	WGH3/3.5X125	0.37ct - 0.49ct
	□	WGH3/4X125	0.38ct - 0.50ct
	□	WGH3/4X150	0.43ct - 0.61ct
	□	WGH3/5X150	0.43ct - 0.61ct

40%	STONE SHAPE	CODE	TCW
	○	WGF3/3R100	0.10ct - 0.13ct
	○	WGF3/3.5R125	0.15ct - 0.20ct
	○	WGF3/4R125	0.15ct - 0.20ct
	○	WGF3/5R125	0.15ct - 0.20ct
	○	WGF3/5R150	0.20ct - 0.29ct
	□	WGF3/3.5X125	0.25ct - 0.33ct
	□	WGF3/4X125	0.25ct - 0.33ct
	□	WGF3/4X150	0.28ct - 0.41ct
	□	WGF3/5X150	0.28ct - 0.41ct

Indicates Depth Ring Back (DRB). TCW: Total Carat Weight. Some content varies according to finger size.

Indicates Depth Ring Back (DRB). TCW: Total Carat Weight. Some content varies according to finger size.

Diamond Set

Court Grain Set

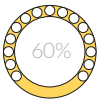
- PLATINUM
- 18CT YELLOW
- 18CT WHITE
- 18CT ROSE



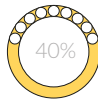
WG11/4R200



WG10/3R150



WG9/2.5R125



2.0mm



2.5mm



3.0mm



4.0mm

COURT - 1.8

100%	STONE SHAPE	CODE	TCW	60%	STONE SHAPE	CODE	TCW	40%	STONE SHAPE	CODE	TCW
○	WG11/2R125		0.34ct - 0.47ct	○	WG10/2R125		0.20ct	○	WG9/2R125		0.13ct
○	WG11/2.5R125		0.34ct - 0.47ct	○	WG10/2.5R125		0.20ct	○	WG9/2.5R125		0.13ct
○	WG11/3R125		0.34ct - 0.47ct	○	WG10/3R125		0.20ct	○	WG9/3R125		0.13ct
○	WG11/3R150		0.51ct - 0.71ct	○	WG10/3R150		0.32ct	○	WG9/3R150		0.23ct
○	WG11/4R150		0.51ct - 0.71ct	○	WG10/4R150		0.32ct	○	WG9/4R150		0.23ct
○	WG11/4R200		0.78ct - 1.02ct	○	WG10/4R200		0.51ct	○	WG9/4R200		0.39ct

Indicates Depth Ring Back (DRB). TCW: Total Carat Weight. Some content varies according to finger size.

Diamond Set

Flat Court Grain Set

- PLATINUM
- 18CT YELLOW
- 18CT WHITE
- 18CT ROSE



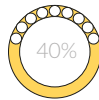
WG27/3R125



WGH27/3R125



WGF27/3R125



2.0mm



2.5mm



3.0mm



4.0mm

FLAT COURT - 1.8

100%	STONE SHAPE	CODE	TCW	60%	STONE SHAPE	CODE	TCW	40%	STONE SHAPE	CODE	TCW
○	WG27/2R125		0.34ct - 0.47ct	○	WGH27/2R125		0.20ct	○	WGF27/2R125		0.13ct
○	WG27/2.5R125		0.34ct - 0.47ct	○	WGH27/2.5R125		0.20ct	○	WGF27/2.5R125		0.13ct
○	WG27/3R125		0.34ct - 0.47ct	○	WGH27/3R125		0.20ct	○	WGF27/3R125		0.13ct
○	WG27/3R150		0.51ct - 0.71ct	○	WGH27/3R150		0.32ct	○	WGF27/3R150		0.23ct
○	WG27/4R150		0.51ct - 0.71ct	○	WGH27/4R150		0.32ct	○	WGF27/4R150		0.23ct
○	WG27/4R200		0.78ct - 1.02ct	○	WGH27/4R200		0.51ct	○	WGF27/4R200		0.39ct

Indicates Depth Ring Back (DRB). TCW: Total Carat Weight. Some content varies according to finger size.

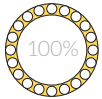
Diamond Set

Flat Court Double Row

- PLATINUM
- 18CT YELLOW
- 18CT WHITE
- 18CT ROSE



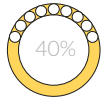
WG1/3.5R100



WGH1/4R125



WGF1/5R125



3.5mm



4.0mm



5.0mm



6.0mm

FLAT COURT - 1.8

STONE SHAPE	CODE	BAND		STONE SHAPE	CODE	BAND		STONE SHAPE	CODE	BAND	
		WIDTH	TCW			WIDTH	TCW			WIDTH	TCW
○	WG1/3.5R100	3.5mm	0.50ct - 0.65ct	○	WGH1/3.5R100	3.5mm	0.29ct - 0.38ct	○	WGF1/3.5R100	3.5mm	0.20ct - 0.24ct
○	WG1/4R125	4.0mm	0.80ct - 1.05ct	○	WGH1/4R125	4.0mm	0.48ct - 0.62ct	○	WGF1/4R125	4.0mm	0.32ct - 0.41ct
○	WG1/5R125	5.0mm	0.75ct - 1.00ct	○	WGH1/5R125	5.0mm	0.45ct - 0.59ct	○	WGF1/5R125	5.0mm	0.30ct - 0.39ct
○	WG1/6R150	6.0mm	0.99ct - 1.44ct	○	WGH1/6R150	6.0mm	0.60ct - 0.84ct	○	WGF1/6R150	6.0mm	0.42ct - 0.57ct

Indicates Depth Ring Back (DRB). TCW: Total Carat Weight. Some content varies according to finger size.



HSE1015PR, DSC43, WG11/2R125, HSB1015



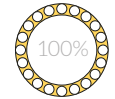
Diamond Set

Court Edge Set - New Design

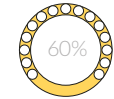
- PLATINUM
- 18CT YELLOW
- 18CT WHITE
- 18CT ROSE



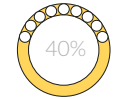
WG35/3R100



WGH35/4R125



WGF35/5R125



3.0mm



4.0mm



5.0mm

COURT - 1.8 

100% STONE				60% STONE				40% STONE			
SHAPE	CODE	BAND WIDTH	TCW	SHAPE	CODE	BAND WIDTH	TCW	SHAPE	CODE	BAND WIDTH	TCW
○	WG35/3R100	3.0mm	0.26ct - 0.32ct	○	WGH35/3R100	3.0mm	0.14ct - 0.18ct	○	WGF35/3R100	3.0mm	0.09ct-0.13ct
○	WG35/4R125	4.0mm	0.40ct - 0.52ct	○	WGH35/4R125	4.0mm	0.22ct - 0.30ct	○	WGF35/4R125	4.0mm	0.15ct-0.19ct
○	WG35/5R125	5.0mm	0.40ct - 0.52ct	○	WGH35/5R125	5.0mm	0.22ct - 0.30ct	○	WGF35/5R125	5.0mm	0.15ct-0.19ct

 Indicates Depth Ring Back (DRB). TCW: Total Carat Weight. Some content varies according to finger size.

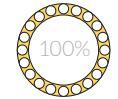
Diamond Set

Court Double Edge Set - New Design

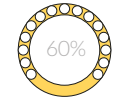
- PLATINUM
- 18CT YELLOW
- 18CT WHITE
- 18CT ROSE



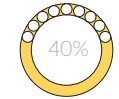
WG36/3R100



WGH36/5R125



WGF36/4R125



3.0mm



4.0mm



5.0mm

COURT - 1.8 

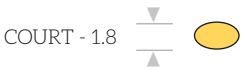
100% STONE				60% STONE				40% STONE			
SHAPE	CODE	BAND WIDTH	TCW	SHAPE	CODE	BAND WIDTH	TCW	SHAPE	CODE	BAND WIDTH	TCW
○	WG36/3R100	3.0mm	0.50ct - 0.65ct	○	WGH36/3R100	3.0mm	0.28ct - 0.36ct	○	WGF36/3R100	3.0mm	0.20ct - 0.26ct
○	WG36/4R125	4.0mm	0.80ct - 1.05ct	○	WGH36/4R125	4.0mm	0.46ct - 0.60ct	○	WGF36/4R125	4.0mm	0.33ct - 0.42ct
○	WG36/5R125	5.0mm	0.80ct - 1.05ct	○	WGH36/5R125	5.0mm	0.46ct - 0.60ct	○	WGF36/5R125	5.0mm	0.33ct - 0.42ct

 Indicates Depth Ring Back (DRB). TCW: Total Carat Weight. Some content varies according to finger size.

Diamond Set

GUARANTEED CARAT WEIGHT
Court Channel Set

- PLATINUM
- 18CT YELLOW
- 18CT WHITE
- 18CT ROSE



ROUND ○	CODE	DRB	BAND WIDTH	TCW
	WG24/2.5R015CT	1.8	2.5mm	0.15ct
	WG24/2.5R018CT	1.8	2.5mm	0.18ct
	WG24/3R025CT	1.8	3.0mm	0.25ct
	WG24/3R030CT	1.8	3.0mm	0.30ct
	WG24/3R033CT	1.8	3.0mm	0.33ct
	WG24/3R045CT	1.8	3.0mm	0.45ct
	WG24/3R050CT	1.8	3.0mm	0.50ct
	WG24/4R070CT	2.3	4.0mm	0.70ct
	WG24/4R075CT	2.3	4.0mm	0.75ct
	WG24/4R095CT	2.3	4.0mm	0.95ct
	WG24/4R100CT	2.3	4.0mm	1.00ct
	WG24/4R125CT	2.3	4.0mm	1.25ct

PRINCESS □	CODE	DRB	BAND WIDTH	TCW
	WG24/2.5X018CT	1.8	2.5mm	0.18ct
	WG24/2.5X020CT	1.8	2.5mm	0.20ct
	WG24/3X025CT	1.8	3.0mm	0.25ct
	WG24/3X030CT	1.8	3.0mm	0.30ct
	WG24/3X033CT	1.8	3.0mm	0.33ct
	WG24/3X045CT	1.8	3.0mm	0.45ct
	WG24/3.5X050CT	2.3	3.5mm	0.50ct
	WG24/3.5X070CT	2.3	3.5mm	0.70ct
	WG24/3.5X075CT	2.3	3.5mm	0.75ct
	WG24/4X095CT	2.3	4.0mm	0.95ct
	WG24/4X100CT	2.3	4.0mm	1.00ct

Indicates Depth Ring Back (DRB). TCW: Total Carat Weight. Some content varies according to finger size.

Diamond Set

GUARANTEED CARAT WEIGHT
Flat Court Channel Set

- PLATINUM
- 18CT YELLOW
- 18CT WHITE
- 18CT ROSE



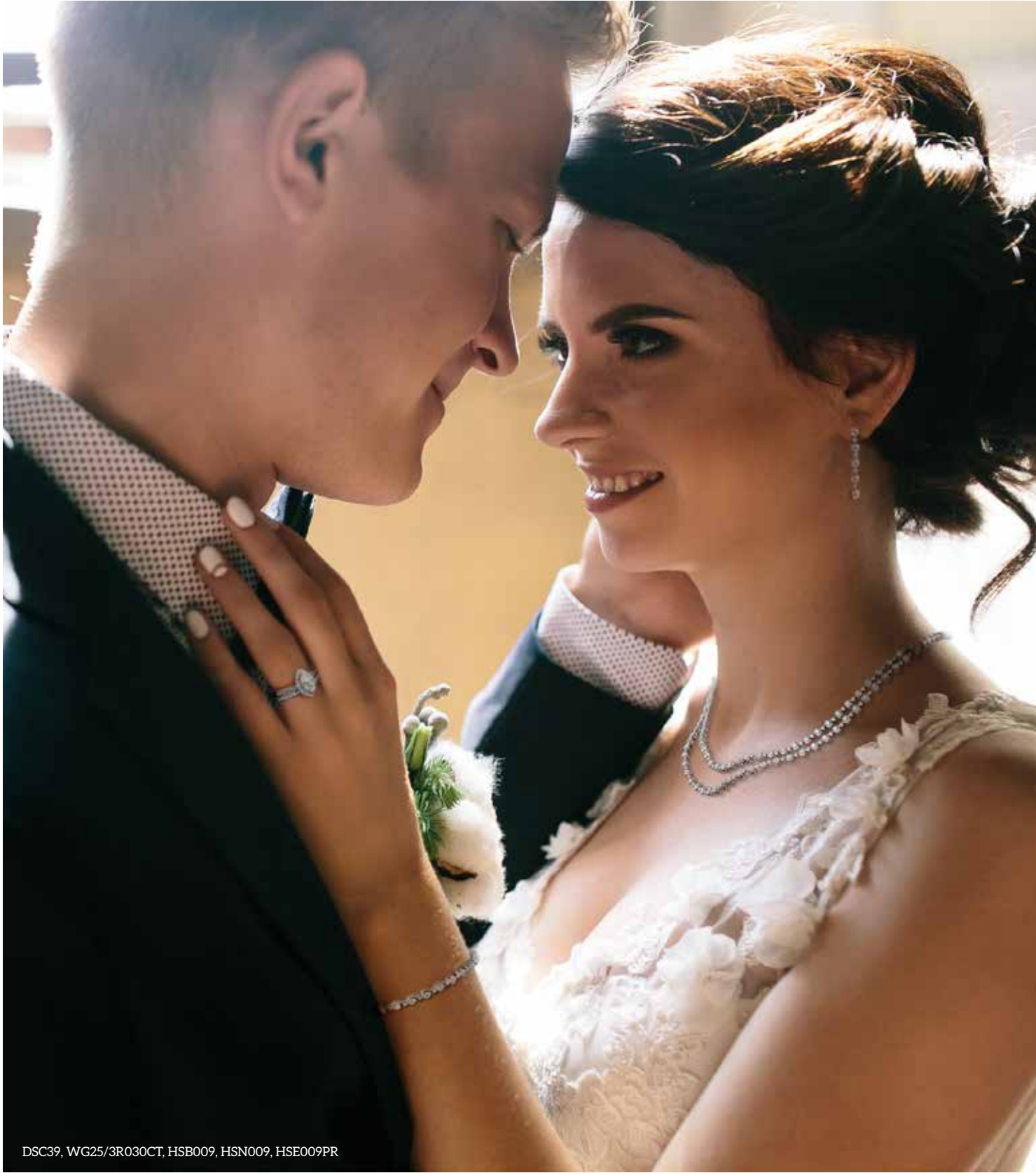
ROUND ○	CODE	DRB	BAND WIDTH	TCW
	WG26/2.5R015CT	1.8	2.5mm	0.15ct
	WG26/2.5R018CT	1.8	2.5mm	0.18ct
	WG26/3R025CT	1.8	3.0mm	0.25ct
	WG26/3R030CT	1.8	3.0mm	0.30ct
	WG26/3R033CT	1.8	3.0mm	0.33ct
	WG26/3R045CT	1.8	3.0mm	0.45ct
	WG26/3R050CT	1.8	3.0mm	0.50ct
	WG26/4R070CT	2.3	4.0mm	0.70ct
	WG26/4R075CT	2.3	4.0mm	0.75ct
	WG26/4R095CT	2.3	4.0mm	0.95ct
	WG26/4R100CT	2.3	4.0mm	1.00ct

PRINCESS □	CODE	DRB	BAND WIDTH	TCW
	WG26/2.5X018CT	1.8	2.5mm	0.18ct
	WG26/2.5X0.20CT	1.8	2.5mm	0.20ct
	WG26/3X025CT	1.8	3.0mm	0.25ct
	WG26/3X030CT	1.8	3.0mm	0.30ct
	WG26/3X033CT	1.8	3.0mm	0.33ct
	WG26/3X045CT	1.8	3.0mm	0.45ct
	WG26/3X050CT	1.8	3.0mm	0.50ct
	WG26/4X070CT	2.3	4.0mm	0.70ct
	WG26/4X075CT	2.3	4.0mm	0.75ct
	WG26/4X095CT	2.3	4.0mm	0.95ct
	WG26/4X100CT	2.3	4.0mm	1.00ct

Indicates Depth Ring Back (DRB). TCW: Total Carat Weight. Some content varies according to finger size.

A choice of 0.15ct - 1.00ct guaranteed carat weight bands are available in a range of band widths and are available set with your choice of GVS or Hsi diamond quality.





Diamond Set

GUARANTEED CARAT WEIGHT
Court Grain Set

- PLATINUM ○
- 18CT YELLOW ●
- 18CT WHITE ●
- 18CT ROSE ●



COURT - 1.8 

ROUND ○	CODE	DRB	BAND WIDTH	TCW
	WG25/2.5R015CT	1.8	2.5mm	0.15ct
	WG25/2.5R018CT	1.8	2.5mm	0.18ct
	WG25/3R025CT	1.8	3.0mm	0.25ct
	WG25/3R030CT	1.8	3.0mm	0.30ct
	WG25/3R033CT	1.8	3.0mm	0.33ct
	WG25/3R045CT	1.8	3.0mm	0.45ct
	WG25/3R050CT	1.8	3.0mm	0.50ct
	WG25/4R070CT	2.3	4.0mm	0.70ct
	WG25/4R075CT	2.3	4.0mm	0.75ct
	WG25/4R095CT	2.3	4.0mm	0.95ct
	WG25/4R100CT	2.3	4.0mm	1.00ct

 Indicates Depth Ring Back (DRB). TCW: Total Carat Weight. Some content varies according to finger size.

Eternity

Vintage Eternity
Scalloped Edge

- PLATINUM
- 18CT YELLOW
- 18CT WHITE
- 18CT ROSE



WVG1/2R180



WVGH1/2R180



WVGF1/2R180



1.35mm



1.5mm



1.7mm



2.0mm



2.5mm

FLAT COURT - 1.8



100%	STONE SHAPE CODE		BAND WIDTH TCW		60%	STONE SHAPE CODE		BAND WIDTH TCW		40%	STONE SHAPE CODE		BAND WIDTH TCW	
	○	WVG1/1.35R100	1.35mm	0.23ct - 0.30ct		○	WVGH1/1.35R100	1.35mm	0.13ct - 0.18ct		○	WVGF1/1.35R100	1.35mm	0.08ct - 0.12ct
	○	WVG1/1.5R130	1.5mm	0.41ct - 0.53ct		○	WVGH1/1.5R130	1.5mm	0.24ct - 0.32ct		○	WVGF1/1.5R130	1.5mm	0.16ct - 0.21ct
	○	WVG1/1.7R150	1.7mm	0.50ct - 0.66ct		○	WVGH1/1.7R150	1.7mm	0.30ct - 0.40ct		○	WVGF1/1.7R150	1.7mm	0.19ct - 0.25ct
	○	WVG1/2R180	2.0mm	0.70ct - 0.90ct		○	WVGH1/2R180	2.0mm	0.40ct - 0.55ct		○	WVGF1/2R180	2.0mm	0.27ct - 0.37ct
	○	WVG1/2.5R230	2.5mm	0.95ct - 1.40ct		○	WVGH1/2.5R230	2.5mm	0.55ct - 0.84ct		○	WVGF1/2.5R230	2.5mm	0.37ct - 0.55ct

Indicates Depth Ring Back (DRB). TCW: Total Carat Weight. Some content varies according to finger size.

Eternity

- PLATINUM
- 18CT YELLOW
- 18CT WHITE
- 18CT ROSE



ET101(3.0)

ET102(2.0)



1.5mm



2.0mm



2.5mm



3.0mm



1.5mm



2.0mm



2.5mm



3.0mm



3.5mm

100% ○	CODE	DRB	STONE WIDTH	TCW	100% ○	CODE	DRB	STONE WIDTH	TCW
	ET101	1.6	1.5	0.49ct - 0.62ct		ET102	2.2	1.5	0.52ct - 0.66ct
		1.8	2.0	0.80ct - 1.00ct			2.5	2.0	0.81ct - 1.00ct
		2.1	2.5	1.30ct - 1.60ct			2.5	2.5	1.30ct - 1.70ct
		2.3	3.0	1.90ct - 2.30ct			3.1	3.0	1.90ct - 2.40ct
							3.7	3.5	2.70ct - 3.35ct

Indicates Depth Ring Back (DRB). TCW: Total Carat Weight. Some content varies according to finger size.

Vintage

Court Grain Set..... 36
 Flat Court Channel Set..... 37
 Grain Finishes 38
 Milgrain Court..... 39



R3-1015, WVG8/2.5R125, HB112, BC5.0 F33



HSE1030PR, HN143



BC5.0 F58, WVG3 (3.0)



BRF6.0, HB289



BC5.0 F66, WVG8/3R125



“ I've never had a moment's doubt. I love you.
 I believe in you completely. You are my dearest one.
 My reason for life.
 Ian McEwan, Atonement ”



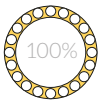
Vintage

Court Grain Set

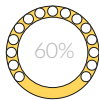
- PLATINUM
- 18CT YELLOW
- 18CT WHITE
- 18CT ROSE



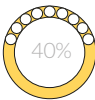
WVG8/3R125



WVGH8/3R125



WVGF8/3R125



2.5mm



3.0mm



4.0mm

COURT - 1.8



100%	STONE SHAPE	CODE	BAND WIDTH	TCW
	○	WVG8/2.5R125	2.5mm	0.38ct - 0.53ct
	○	WVG8/3R125	3.0mm	0.38ct - 0.53ct
	○	WVG8/3R150	3.0mm	0.51ct - 0.71ct
	○	WVG8/4R150	4.0mm	0.51ct - 0.71ct
	○	WVG8/4R200	4.0mm	0.78ct - 1.02ct

60%	STONE SHAPE	CODE	BAND WIDTH	TCW
	○	WVGH8/2.5R125	2.5mm	0.20ct
	○	WVGH8/3R125	3.0mm	0.20ct
	○	WVGH8/3R150	3.0mm	0.31ct
	○	WVGH8/4R150	4.0mm	0.31ct
	○	WVGH8/4R200	4.0mm	0.51ct

40%	STONE SHAPE	CODE	BAND WIDTH	TCW
	○	WVGF8/2.5R125	2.5mm	0.13ct
	○	WVGF8/3R125	3.0mm	0.13ct
	○	WVGF8/3R150	3.0mm	0.23ct
	○	WVGF8/4R150	4.0mm	0.23ct
	○	WVGF8/4R200	4.0mm	0.39ct

Indicates Depth Ring Back (DRB). TCW: Total Carat Weight. Some content varies according to finger size.

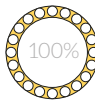
Vintage

Flat Court Channel Set

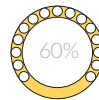
- PLATINUM
- 18CT YELLOW
- 18CT WHITE
- 18CT ROSE



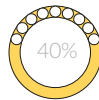
WVG7/3X125



WVGH7/2.5R125



WVGF7/2.5R125



2.5mm



3.0mm



3.5mm

FLAT COURT - 1.8



100%	STONE SHAPE	CODE	BAND WIDTH	TCW
	○	WVG7/2.5R125	2.5mm	0.37ct - 0.50ct
	○	WVG7/3R125	3.0mm	0.37ct - 0.50ct
	○	WVG7/3.5R125	3.5mm	0.37ct - 0.50ct
	○	WVG7/3.5R150	3.5mm	0.53ct - 0.72ct
	□	WVG7/3X125	3.0mm	0.60ct - 0.75ct
	□	WVG7/3X150	3.0mm	0.78ct - 1.06ct

60%	STONE SHAPE	CODE	BAND WIDTH	TCW
	○	WVGH7/2.5R125	2.5mm	0.22ct - 0.29ct
	○	WVGH7/3R125	3.0mm	0.22ct - 0.29ct
	○	WVGH7/3.5R125	3.5mm	0.22ct - 0.29ct
	○	WVGH7/3.5R150	3.5mm	0.30ct - 0.42ct
	□	WVGH7/3X125	3.0mm	0.35ct - 0.50ct
	□	WVGH7/3X150	3.0mm	0.43ct - 0.61ct

40%	STONE SHAPE	CODE	BAND WIDTH	TCW
	○	WVGF7/2.5R125	2.5mm	0.15ct - 0.20ct
	○	WVGF7/3R125	3.0mm	0.15ct - 0.20ct
	○	WVGF7/3.5R125	3.5mm	0.15ct - 0.20ct
	○	WVGF7/3.5R150	3.5mm	0.21ct - 0.29ct
	□	WVGF7/3X125	3.0mm	0.25ct - 0.33ct
	□	WVGF7/3X150	3.0mm	0.28ct - 0.41ct

Indicates Depth Ring Back (DRB). TCW: Total Carat Weight. Some content varies according to finger size.

Vintage

Grain Finishes

- PLATINUM
- 18CT YELLOW
- 18CT WHITE
- 18CT ROSE



WVG3/2.5
Flat Court



WVG4/2.5
Court



WVG5/3.0
Flat Court



WVG6/3.5
Court

1.8

CODE	BAND WIDTH	CODE	BAND WIDTH	CODE	BAND WIDTH	CODE	BAND WIDTH
WVG3	2.5mm	WVG4	2.5mm	WVG5	2.5mm	WVG6	2.5mm
	3.0mm		3.0mm		3.0mm		3.0mm
	3.5mm		3.5mm		3.5mm		3.5mm

Indicates Depth Ring Back (DRB).

Vintage

Milgrain Court Channel Set - New Design

- PLATINUM
- 18CT YELLOW
- 18CT WHITE
- 18CT ROSE



WVG9/2.5R125

WVGH9/3X150

WVG9/3R125



2.5mm



3.0mm



3.5mm

COURT - 1.8mm

100%	STONE		BAND	TCW	60%	STONE		BAND	TCW	40%	STONE		BAND	TCW
	SHAPE	CODE	WIDTH			SHAPE	CODE	WIDTH			SHAPE	CODE	WIDTH	
	○	WVG9/2.5R125	2.5mm	0.37ct - 0.50ct		○	WVGH9/2.5R125	2.5mm	0.22ct - 0.29ct		○	WVGF9/2.5R125	2.5mm	0.15ct - 0.20ct
	○	WVG9/3R125	3.0mm	0.37ct - 0.50ct		○	WVGH9/3R125	3.0mm	0.22ct - 0.30ct		○	WVGF9/3R125	3.0mm	0.15ct - 0.20ct
	○	WVG9/3.5R150	3.5mm	0.53ct - 0.72ct		○	WVGH9/3.5R150	3.5mm	0.30ct - 0.42ct		○	WVGF9/3.5R150	3.5mm	0.21ct - 0.29ct
	□	WVG9/2.5X125	2.5mm	0.60ct - 0.75ct		□	WVGH9/2.5X125	2.5mm	0.37ct - 0.50ct		□	WVGF9/2.5X125	2.5mm	0.25ct - 0.32ct
	□	WVG9/3X125	3.0mm	0.60ct - 0.75ct		□	WVGH9/3X125	3.0mm	0.37ct - 0.50ct		□	WVGF9/3X125	3.0mm	0.25ct - 0.32ct
	□	WVG9/3X150	3.0mm	0.78ct - 1.06ct		□	WVGH9/3X150	3.0mm	0.43ct - 0.61ct		□	WVGF9/3X150	3.0mm	0.28ct - 0.41ct

Indicates Depth Ring Back (DRB). TCW: Total Carat Weight. Some content varies according to finger size.





HSN1034,
DSC62, WS39
(2.5), HSB1034



BD5.0, WS57



HSN025,
HSP100, R3-266,
WS24 (3.0)



R1-2001, WS22 (2.8), BC5.0 F11



“You must allow me to tell you how ardently
I admire and love you.”
Jane Austen, *Pride & Prejudice*

Shaped

- PLATINUM
- 18CT YELLOW
- 18CT WHITE
- 18CT ROSE



WS22



WS23



WS25



WS33



WS31



WS29



WS28



WS37



WS39



WS24



WS32



WS30



RL68

CODE	DRB	BAND WIDTH	TCW	CODE	DRB	BAND WIDTH	TCW	CODE	DRB	BAND WIDTH	TCW	CODE	DRB	BAND WIDTH	TCW
WS22	1.6	2.3mm	0.09ct	WS37	1.8	2.5mm	-	WS39	1.8	2.5mm	-	WS31	1.8	2.5mm	0.14ct
	1.6	2.8mm	0.15ct		1.8	3.0mm	-		1.8	3.0mm	-		1.8	3.0mm	0.18ct
	1.6	3.3mm	0.17ct		1.8	3.5mm	-		1.8	3.5mm	-		1.8	3.5mm	0.27ct
	1.8	3.8mm	0.22ct		WS24	1.6	2.5mm	0.14ct	WS29	1.3	2.0mm	0.10ct			
	1.8	4.3mm	0.25ct			1.6	3.0mm	0.18ct		1.5	2.5mm	0.25ct			
WS23	1.6	2.3mm	-	WS25	1.8	2.5mm	-	WS32	1.6	3.5mm	0.27ct	WS30	1.7	3.0mm	0.45ct
	1.6	2.8mm	-		1.8	3.0mm	-		1.8	2.5mm	0.14ct		1.8	3.5mm	0.45ct
	1.6	3.3mm	-		1.8	3.5mm	-	1.8	3.0mm	0.18ct	1.6		2.5mm	0.02ct	
	1.8	3.8mm	-	WS33	1.8	2.5mm	0.05ct	1.8	3.5mm	0.27ct	1.6	3.0mm	0.02ct		
	1.8	4.3mm	-		1.8	3.0mm	0.12ct				1.6	3.5mm	0.02ct		
WS28	1.6	2.3mm	0.12ct	1.8	3.5mm	0.16ct	RL68 1.5 2.7mm 0.33ct								
	1.6	2.7mm	0.21ct												
	1.6	3.3mm	0.30ct												

DRB - Depth Ring Back. TCW - Total Carat Weight. Finger sizes available from H to Z.

Shaped

New Designs

- PLATINUM
- 18CT YELLOW
- 18CT WHITE
- 18CT ROSE



WS80



WS81



WS78



WS87



WS57



WS51



WS82



WS83



WS44



WS45



WS61



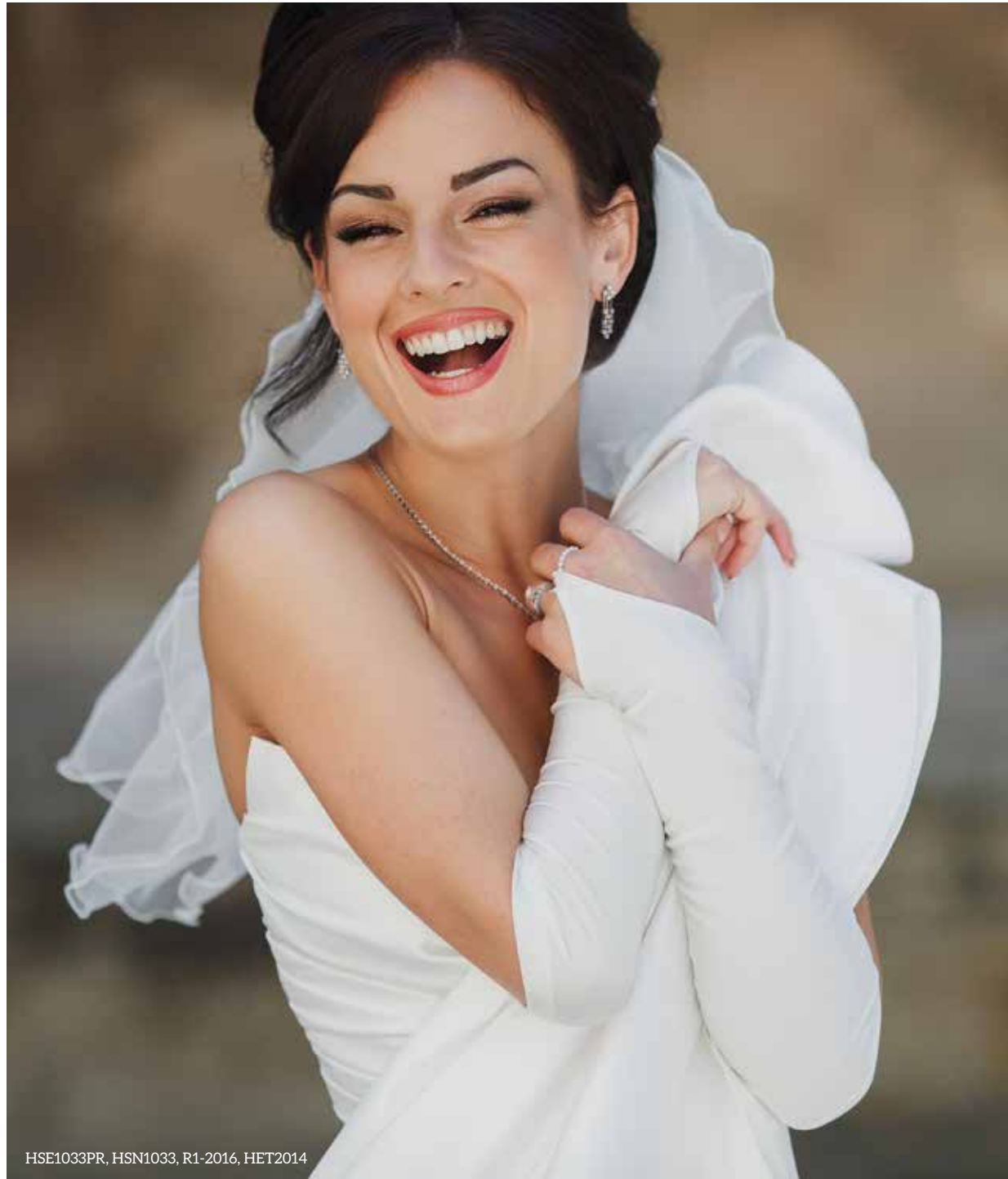
WS96

CODE	DRB	BAND WIDTH	TCW	CODE	DRB	BAND WIDTH	TCW	CODE	DRB	BAND WIDTH	TCW	CODE	DRB	BAND WIDTH	TCW		
WS80	1.8	4.0mm	-	WS82	1.8	2.0mm	-	WS78	1.8	2.5mm	0.12ct	WS61	1.8	2.2mm	0.20ct		
	1.8	4.5mm	-		1.8	2.5mm	-		1.8	2.5mm	0.50ct		1.8	2.0mm	0.17ct		
WS81	1.8	2.5mm	0.12ct	WS83	1.8	2.0mm	0.08ct	WS44	1.8	3.0mm	0.26ct						
	1.8	3.0mm	0.18ct		1.8	2.5mm	0.15ct		WS45	1.8	3.0mm	0.26ct					
	1.8	3.5mm	0.22ct														
	1.8	4.0mm	0.27ct														
	1.8	4.5mm	0.34ct														

DRB - Depth Ring Back. TCW - Total Carat Weight. Finger sizes available from H to Z.



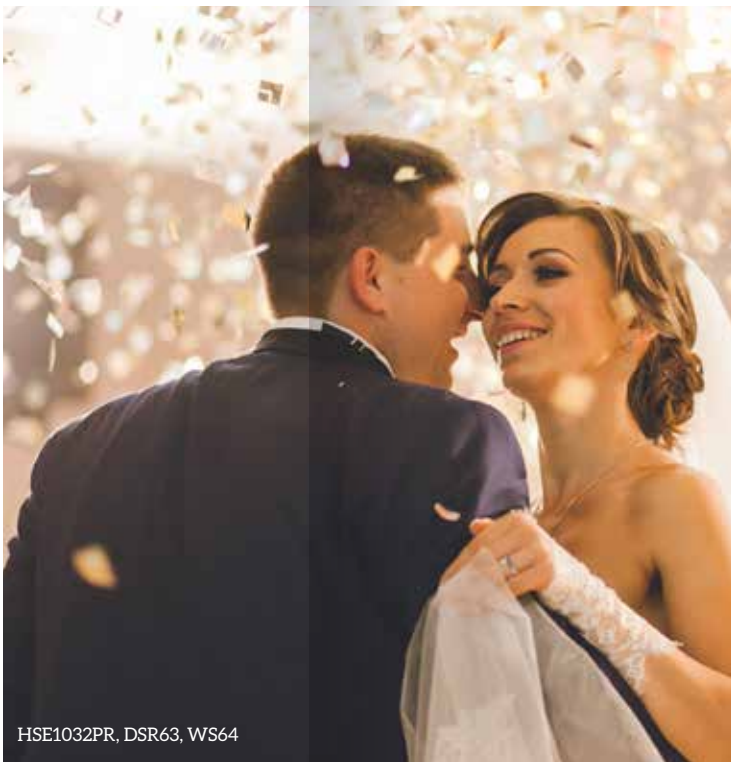
Decorative



HSE1033PR, HSN1033, R1-2016, HET2014



R1-174, WS63



HSE1032PR, DSR63, WS64



BC5.0 F65, WS66



WS50, WS52



HSE100PR,
HSB100, DSL120,
BFC6.0

“Whatever our souls are made of,
his and mine are the same.
Emily Brontë, Wuthering Heights”



Decorative

New Designs

- PLATINUM
- 18CT YELLOW
- 18CT WHITE
- 18CT ROSE



CODE	DRB	BAND WIDTH	TCW
WS52	1.4	2.4mm	0.08ct
WS93	1.4	2.8mm	0.15ct
WS59	1.6	1.9mm	0.03ct
WS50	1.8	2.8mm	0.42ct

DRB - Depth Ring Back. TCW - Total Carat Weight. Finger sizes available from H to Z.

Decorative

New Designs

- PLATINUM
- 18CT YELLOW
- 18CT WHITE
- 18CT ROSE



CODE	DRB	BAND WIDTH	COVERAGE	TCW
WS63	2.0	2.0mm	60%	0.13ct - 0.15ct
WS64	2.3	2.8mm	60%	0.18ct - 0.22ct
WS65	2.3	2.8mm	60%	0.37ct - 0.43ct
WS66	1.4	2.5mm	-	0.18ct
WS67	1.8	3.0mm	-	0.08ct

CODE	DRB	BAND WIDTH	TCW
WS79(4.0)	1.4	4.0mm	0.14ct
WS79(6.0)	1.9	6.0mm	0.19ct
WS89	1.9	2.0mm	-
	1.9	2.5mm	-
	1.9	3.0mm	-
WS97	1.8	2.8mm	0.32ct
WS98	1.8	2.0mm	0.42ct

DRB - Depth Ring Back. TCW - Total Carat Weight. Finger sizes available from H to Z.

Signets

Oval / Cushion50
Fancy Shaped.....51



SR44, SR74



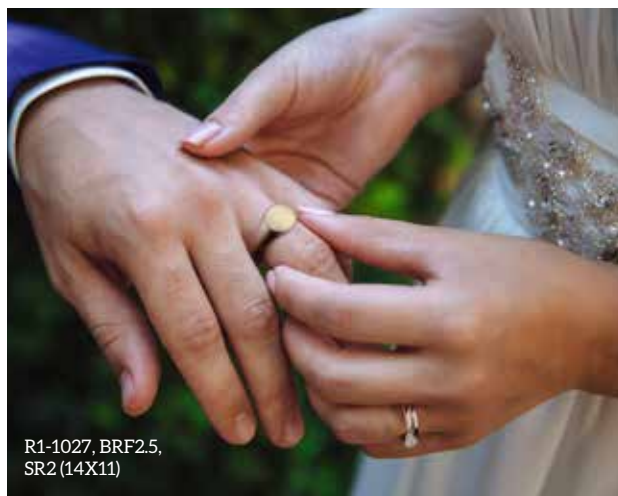
SR44, M94-P3, BHCU(2.0),
HSB1003, HSN1003,
HSE1003PR



SR77, SR75



SR2 (14X11)



R1-1027, BRP2.5,
SR2 (14X11)



SR74



FSR1 (14X12)



“I don't believe in magic.” The young boy said. The old man smiled. You will, when you see her.
Harper Lee, To Kill a Mockingbirds

Signets

Oval/Cushion Signets

- PLATINUM
- 18CT YELLOW
- 18CT WHITE
- 18CT ROSE
- 9CT YELLOW
- 9CT WHITE

FSR1 (16x13)



SR2



SR73



SR41

SR44

CODE	TABLET SHAPE	TABLET SIZE
FSR1	OVAL	16 x 13
	OVAL	14 x 12
	OVAL	12 x 10
	OVAL	10 x 8

CODE	TABLET SHAPE	TABLET SIZE
SR2	OVAL	14 x 11
SR41	OVAL	10 x 8
SR44	CUSHION	8 x 7
SR73	ELONGATED OVAL	11.5 x 6

Finger sizes available from H to Z.

Signets

Fancy Shaped Signets - New Designs

- PLATINUM
- 18CT YELLOW
- 18CT WHITE
- 18CT ROSE
- 9CT YELLOW
- 9CT WHITE

SR77



SR75



SR68



SR74



CODE	TABLET SHAPE	TABLET SIZE
SR75	ELONGATED HEXAGON	14 x 3.5
	ELONGATED HEXAGON	14 x 6
SR77	ELONGATED HEXAGON With Diamonds	14 x 3.5

CODE	TABLET SHAPE	TABLET SIZE
SR68	RECTANGLE	12 x 7
SR74	HEXAGON	10 x 9

Finger sizes available from H to Z.

Finishing Touches

To personalise your Classic Wedding Band- choose from our unique range of finishing touches from high polished looks to satin designs.



RL99, HSN1006, HSE1006PR



BC5.0 F46, BC3.0 F46

BC5.0 F64, BC5.0 F69



BC5.0 F49



BC5.0 F54, BC3.0 F54



BC5.0 F52, BC5.0 F60

“ He stepped down, trying not to look long at her, as if she were the sun, yet he saw her, like the sun, even without looking. ”
Leo Tolstoy, Anna Karenina

Finishing Touches

Finishes are available on band widths 3mm and above.

- COURT
- FLAT COURT
- D-SHAPE
- CENTRE CUSHION
- ROUNDED FLAT
- PARIS PROFILE



F04
SATIN CENTRE WITH
BRIGHT STEP CUT EDGES



F05
SATIN FINISH WITH A
CENTRAL BRIGHT CUT
CHANNEL



F09
SATIN FINISH WITH A
SINGLE CENTRAL GROOVE



F11
POLISHED FINISH WITH
TWO OFF CENTRE
GROOVES



F14
SATIN FINISH WITH TWO
CENTRAL GROOVES



F20
V CUT LINES (QUANTITY
TO MATCH RING WIDTH)



F02
SATIN FINISH WITH
THREE OFF CENTRE
GROOVES



F06
SATIN CENTRE
BORDERED BY GROOVES
AND POLISHED EDGES



F03
POLISHED WITH
STEP CUT EDGES



F46
FABRIC TEXTURED
MATTE CENTRE, WITH
A POLISHED BORDER



F44
POLISHED FINISH
WITH MILGRAIN EDGES
AND TWO ENGRAVED
CENTRAL LINES

Finishing Touches

New Designs



F35
SATIN FINISH WITH ENGRAVED
TRIPLE LINES, FOR A SOFT
CUSHIONED LOOK



F49
SATIN FINISH WITH
ENGRAVED QUILTING
FINISH



F48
SATIN FINISH WITH
THREE ENGRAVED LINES
AT EACH EDGE



F70
SATIN FINISH WITH
TWO DIAGONAL
LINES SWEEPING
HORIZONTALLY



F52
DIAMOND CUT WITH THE
ILLUSION OF A PRINCESS
DIAMOND SET FINISH,
WITH A FINE POLISHED
BORDER



F73
DIAMOND CUT ART
DECO EFFECT WITH A
SUNBURST SPARKLE
TEXTURE



F54
DIAMOND CUT WITH
THE ILLUSION OF A
PRINCESS DIAMOND
SET FINISH



F55
POLISHED FINISH WITH
SCALLOP DETAIL EDGING
ON EACH SIDE



F56
DIAMOND CUT ART
DECO EFFECT WITH A
SUNBURST SPARKLE
TEXTURE AND A
POLISHED FINE BORDER



F57
POLISHED FINISH WITH
A STARBURST BORDER
DETAIL



F58
FROSTED FINISH WITH A
ROUND DIAMOND CUT
SPARKLE DETAIL ALONG
THE CENTRE



F59
SATIN FINISH WITH
MILGRAIN EDGING AND
DIAMOND CUT SPARKLE
DETAIL SPACED AT
INTERVALS



F60
POLISHED FINISH WITH
OFFSET DIAMOND CUT
SPARKLE DETAIL



F61
SATIN FINISH WITH
DIAMOND CUT SPARKLE
DETAIL ON EACH EDGE

To personalise your Classic Wedding Band - choose from our unique designs, in a choice of high polished or satin finished designs.

Finishing Touches can be applied to the following profiles: Court, Flat Court, D-Shape, Centre Cushion, Rounded Flat and Paris Profile. View our classic bands from pages 6-15.



Finishing Touches

New Designs



F34
ENGRAVED DIAGONAL
LINES WITH POLISHED
BORDER



F37
POLISHED CENTRE WITH
ENGRAVED DIAGONAL LINES
BORDERING EITHER SIDE



F38
POLISHED CENTRE WITH
ENGRAVED CROSSHATCH TEXTURE
BORDERING EITHER SIDE



F33
CROSSHATCH ENGRAVED
TEXTURE, WITH A
POLISHED BORDER



F62
CRISS CROSS TEXTURE
WITH A SOFT POLISHED
BORDER



F63
TWO ROWS OF DIAGONAL
LINE ENGRAVING WITH A
POLISHED BORDER



F64
ENGRAVED FEATHER
TEXTURE WITH A SLIM
POLISHED BORDER



F65
TRIPLE SOFT LINES
TO CREATE A SOFT
ROUNDED PROFILE WITH
POLISHED FINISH



F66
GEOMETRIC FACETED
CENTRE WITH A
POLISHED BORDER



F67
SATIN FINISH CENTRE
WITH A BORDER OF
ENGRAVED VERTICAL
LINES AT EACH EDGE



F68
ONE SIDE SATIN FINISH
WITH ENGRAVED
CENTRAL LINE AND
THE OTHER SIDE CROSS
HATCH TEXTURE



F69
ONE SIDE SATIN FINISH
WITH ENGRAVED
CENTRAL LINE AND THE
OTHER SIDE FROSTED
FABRIC TEXTURE



F71
FACETED VERTICAL
LINES WITH A POLISHED
FINISH



F72
THREE ROWS OF
FACETED HEXAGON
TEXTURE WITH A
POLISHED FINISH

A Personal Touch

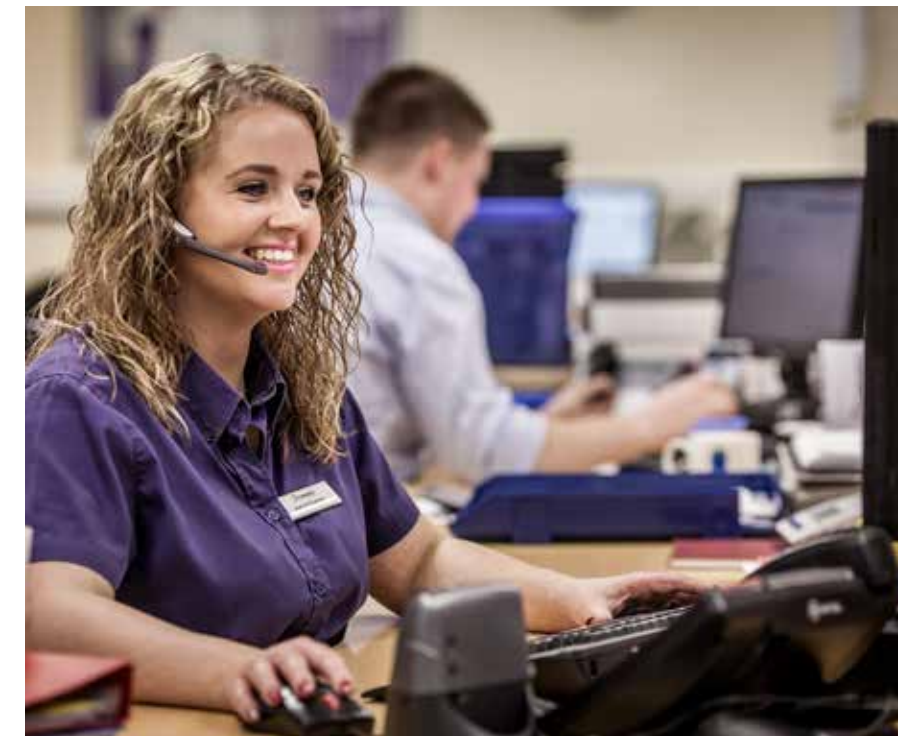
Our Promise to You

Created & Crafted in our state of the art manufacturing facility, we are committed to excellent service, quality and innovation.

Service

Striving for the best possible service levels, we have adopted continuous improvement techniques within our in house manufacturing

facility- developed from the automotive industry. These changes to our processes, as well as continued investment into new technology, have enabled us to provide highly competitive lead times across our entire wedding ring collection. Stock items can be delivered within 24-48 hours, and special orders within 10 days.



Bespoke

Our shaped wedding ring service allows you to create a bespoke wedding band crafted to your customer's individual requirements. Whether plain or stone set each ring is expertly created using the latest 3D scanning technology to ensure a perfect fit.

For orders or enquiries please contact our sister company, Weston Beamor:
Shapedweds@westonbeamor.co.uk
+ 44 (0) 121 678 4131

Engraving

We provide an in house engraving service, please contact us on info@dominojewellery.com for more information.



Finishing Touches can be applied to the following profiles: Court, Flat Court, D-Shape, Centre Cushion, Rounded Flat and Paris Profile. View our classic bands from pages 6-15.



M66-A1, BC2.5, BC5.0 F70



Creating Trend Led Commercial Rings

Our award-winning design team create unique contemporary jewellery with design details and a back story which help you deliver real impact at the point of sale.

Investment in Technology

Committed to excellent service, we have invested in new technology and processes to provide our retailers with the highest quality products.



Heritage & Quality
decades of perfection

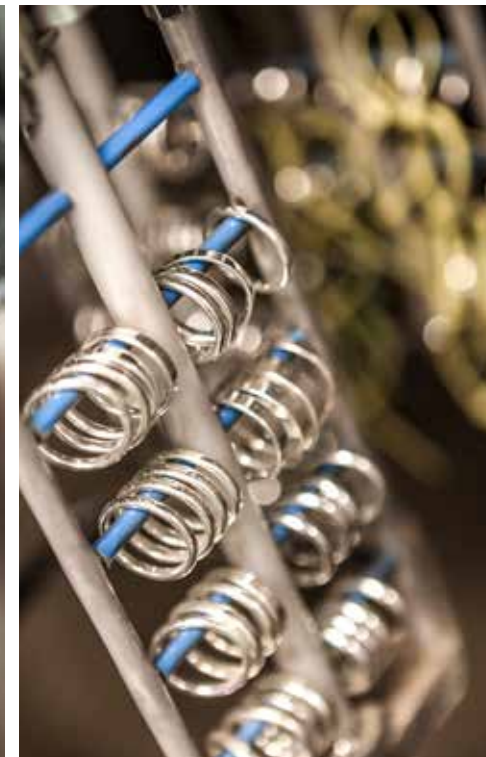


A Workforce with over 1000 Years of Combined Experience

We have won many plaudits for our design excellence and this, coupled with our attention to detail and ethos for service, ensures that our jewellery always offers that little bit more.



Honest & Ethical
values you can trust



Providing Jewellery with the Highest Ethical Credentials

As a member of the 'Responsible Jewellery Council' and an 'Investors in People' company, we guarantee you jewellery with the highest ethical credentials.



Index

CODE	PAGE
BBE	15
BC	8
BCCU	10
BD	13
BDC	14
BFC	9
BHC	8
BHCU	10
BHD	13
BHDC	14
BHFC	9
BLBE	15
BLC	8
BLCU	10
BLFC	9
BRF	12
ET101	33
ET102	33
F02	54
F03	54
F04	54
F05	54
F06	54
F09	54
F11	54
F14	54
F20	54
F33	56
F34	56
F35	55
F37	56
F38	56
F44	54
F46	54
F48	55
F49	55
F52	55
F54	55
F55	55
F56	55
F57	55
F58	55
F59	55
F60	55

CODE	PAGE
F61	55
F62	56
F63	56
F64	56
F65	56
F66	56
F67	56
F68	56
F69	56
F70	55
F71	56
F72	56
F73	55
FSR1	50
RL68	42
SR2	50
SR41	50
SR44	50
SR68	51
SR73	50
SR74	51
SR75	51
SR77	51
WG1	24
WG10	22
WG11	22
WG2	19
WG24	28
WG25	31
WG26	29
WG27	23
WG3	21
WG35	26
WG36	27
WG4	20
WG5	18
WG8	20
WG9	22
WGF1	24
WGF2	19
WGF27	23
WGF3	21
WGF35	26
WGF36	27

CODE	PAGE
WGF4	20
WGF5	18
WGH1	24
WGH2	19
WGH27	23
WGH3	21
WGH35	26
WGH36	27
WGH4	20
WGH5	18
WS22	42
WS23	42
WS24	42
WS25	42
WS28	42
WS29	42
WS30	42
WS31	42
WS32	42
WS33	42
WS37	42
WS39	42
WS44	43
WS45	43
WS50	46
WS51	43
WS52	46
WS57	43
WS59	46
WS61	43
WS63	47
WS64	47
WS65	47
WS66	47
WS67	47
WS78	43
WS79	47
WS80	43
WS81	43
WS82	43
WS83	43
WS87	43
WS89	47
WS93	46

CODE	PAGE
WS96	43
WS97	47
WS98	47
WVG1	32
WVG3	38
WVG4	38
WVG5	38
WVG6	38
WVG7	37
WVG8	36
WVG9	39
WVGF1	32
WVGF7	37
WVGF8	36
WVGF9	39
WVGH1	32
WVGH7	37
WVGH8	36
WVGH9	39

Products are available in Platinum, Palladium, 18ct and 9ct Gold alloys. Wedding rings are supplied hallmarked, finished and stone set. Stone set wedding bands are set with your choice of GVS or HSi diamonds. Actual carat weights and dimensions are not guaranteed and can vary from those published. All information is approximate and should be used as a guide only.

